



10 Nonington Court
Sandwich Road Nonington CT15 4HH
£800 PCM



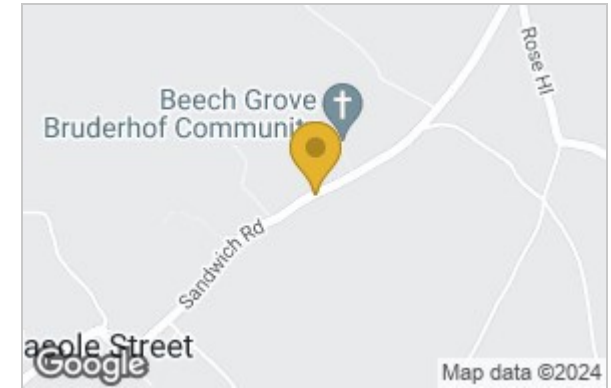
10 Nonington Court, Sandwich Road, Nonington, CT15 4HH

This is a purpose built two bedroom apartment is located in the beautiful countryside setting of Nonington Court allowing for breath taking views and peaceful walks. The property comprises of a modern kitchen/dining room, Open plan into a nice size living room with balcony. Two double bedrooms with built in wardrobes and a further two balconies. Family bathroom with shower over bath. Communal gardens with tennis court and gym. Available unfurnished.

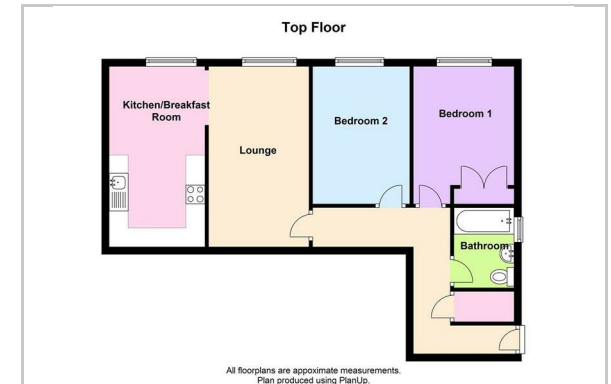
Note: There is a £20 per calendar month fee for water. 12 Months. Council Tax Band B.



Area Map



Floor Plan



Energy Efficiency Graph

Energy Efficiency Rating		Current	Potential
Very energy efficient - lower running costs			
(92 plus) A			
(81-91) B			
(69-80) C			
(55-68) D			
(39-54) E			
(21-38) F			
(1-20) G			
Not energy efficient - higher running costs			
England & Wales		EU Directive 2002/91/EC	

These particulars, whilst believed to be accurate are set out as a general outline only for guidance and do not constitute any part of an offer or contract. Intending purchasers should not rely on them as statements of representation of fact, but must satisfy themselves by inspection or otherwise as to their accuracy. No person in this firm's employment has the authority to make or give any representation or warranty in respect of the property.